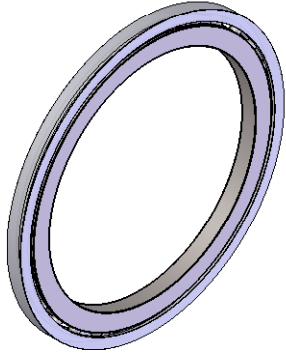
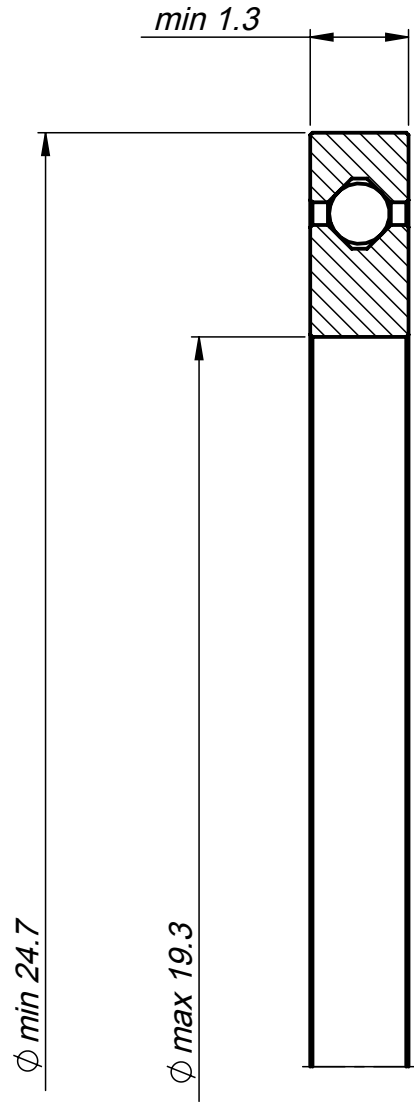


SW



Ech.: 2:1



Ø Primitif	22.56 mm
Ø Bille	0.80 mm
Nb de Billes	30
Jeu axial	20 / 60 µm
Angle de balancement max	0.31°

Angles non coté: 0.03x45°

Remplace		Usinage général		Dessiné	Date	Désignation	Echelle
					15.05.2012		
Matière		Remarque		Contrôlé		Ensemble \ Projet	Format A4V
							N° identification
Modifié	Libéré	Cotes en mm - Tolérances en µm Tol. générales selon ISO 2768-FH : Angles: ± 2° Dimensions: <math><0.5 \geq 0.5 \dots 6 \geq 6 \dots 30 \geq 30 \dots 120</math> <math>\pm 30 \mu \pm 50 \mu \pm 100 \mu \pm 150 \mu</math>				80 - 2256	
RB: .		 MPS Micro Precision Systems AG					01
Date: 30.05.2012							
Visa: zwahlenm							

We reserve all right in connection with this document and in the subject thereof. By acceptance of the document the recipient acknowledges these rights and undertakes not to publish the document nor the subject thereof in full or in part, nor to make them available to any third party without our prior express written authorization, nor to use it for any purpose other than for which it was delivered to him.